

HOSPITAL FACILITIES DOCUMENTATION CASE STUDY



ABOUT SÖRMLAND HEALTH REGION

The Region looks after the health care needs of 270,000 people west of Stockholm, Sweden. With a budget in 2011 of approximately \$850 million, it employs 7,400 people and runs 4 hospitals and 250 other medical buildings totaling around 5 million square feet.

BUSINESS CHALLENGE

The Facilities Director for the Region had several issues related to document management.

- 50,000 work orders were issued annually but the maintenance staff often found it hard to locate the drawings and manuals they needed. This resulted in delays and down time.
- Frequent minor changes to equipment were redlined on printed copies but these often failed to be incorporated on the master drawings. Sometimes there were no records of changes at all.
- They initiated about 300 building projects each year and keeping track of drawings and the changes was a problem.
- There was also a purely medical issue: Due to the problems of nosocomial infection, changes in cleaning practices had to be made to better prevent locally acquired infections. They needed a way to expediently allocate daily cleaning tasks to multiple external contractors and display which rooms to clean and the level of cleaning required on a particular day.
- Another concern was room utilization. Medical specialists rented their consulting and operating spaces from the Council for short terms and at short notice. Specialists were unable to get up-to-date information on the availability of consulting rooms.

SOLUTION

A drawing management system (DMS) was the obvious solution for improving productivity of the maintenance staff and managing project drawings. Trix Organizer was chosen from a number of competing candidates.

In addition to providing the software our remit included scanning and converting old architectural drawings to AutoCAD 3D drawings to support the space and cleaning planning systems. The drawings were scanned and stored as raster files with their title block information stored as metadata in the Trix Organizer system. Automated QA routines were built to check the metadata and drawings prior to loading.

Our software configuration team customized the Trix Organizer database and integrated it with the existing FM software using a standard Trix Systems API.

BENEFITS RESULTING FROM INSTALLING TRIX ORGANIZER

Reducing costs, increasing revenues and improving patient care by

Access

End users find their documents in the system directly from their own computers without needing assistance from document specialists, saving time and frustration. The Trix Organizer interface mimics Windows Explorer, making it familiar to users.

Trusting the data

The Trix Organizer system establishes a rigorous real-time control of changes and approvals by keeping track of the CAD drawings, scans, all technical documents (manuals, procedures, etc.), Project Designs and As-builts.

Every document is now digital and current. The result is that staff now 'trust the data' so decision making and reaction times in response to maintenance requests are faster. In turn the medical staff receives better service. Minor changes are recorded in real time as redline inside the Trix Organizer viewer, eliminating the issue with redline on prints.

Finding locations quicker

In a click users see the location of the equipment or room displayed in plan views in Trix Organizer.

Finding equipment

In a click rooms are displayed in a drawing in the viewer. The same click brings up from the integrated FM system a list of all the equipment belonging to the room.

Querying Contracts and Rentals

Trix Organizer displays color coded drawings and diagrams showing the contracts and the depth of cleaning required in each room. These can be printed out from the system.

Contact 978 256 4445 or sales@trixsystems.com for more information.

Collecting Documents for Work Orders

Users can go directly from the work order in the FM system to see relevant drawings and manuals in the Trix Organizer system.

Avoiding email attachments everywhere

There are no more clogs to the email systems because the Trix Organizer system is used instead to view and mark up drawings.

Design and ISO standards

Trix Organizer enforces standards of design and procedures, both internally and by outside vendors.

3D Viewing

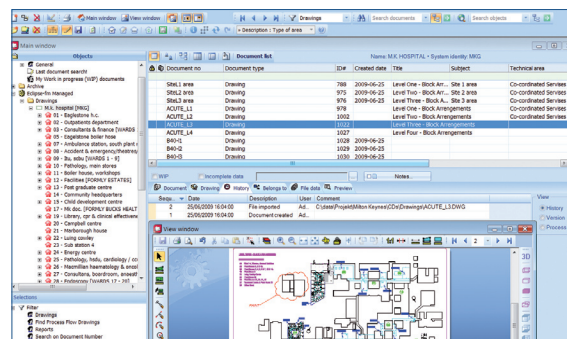
The built in CAD viewer is used to provide 3D visualizations for planning and conceptual purposes.

Cost Savings and increased revenue

The Facilities department alone is saving over \$60,000 a year because staff find the correct drawings and documents much more quickly. In addition, rental occupancy and income has increased by 10 %.

Fewer infections

Infections have been prevented because the new system has enabled more effective responses to requests for deeper cleaning.



GOTHENBURG | STOCKHOLM | BOSTON | LONDON

We deliver turnkey document management systems designed specifically for the robust requirements of the engineering world. Product development is in-house and we quickly respond to emerging needs, so our clients enjoy customized solutions with all the reliability and reasonable pricing of standardized software.