

STRUCTURAL ENGINEERING DOCUMENTATION CASE STUDY



ABOUT ROWECORD ENGINEERING LTD

Rowecord is one of the UK's largest structural engineering companies and is located in Newport, Wales. One of their recent major projects is the 2012 London Olympics Aquatics Center. The Rowecord Group has an annual turnover of £120M (\$200M) and employs over 1,000 people.

BUSINESS CHALLENGE

Rowecord Engineering's drawing office was using a file based system to manage their documents and the PDF files produced by their steel detailing software for issue to manufacturing and sites. This caused consuming and costly bottlenecks in the production and distribution of the paper transmittals.

SOLUTION

The intention was that Trix Organizer™ EDMS would store and manage all PDF files and other documents. After a short on-site pre-study by Trix Organizer consultants a pilot system was designed and installed for a 60 day test. Rowecord Engineering was impressed and ordered the permanent licenses before the pilot ended. The system immediately went live. After a couple of months of use, Stan Lugg, Project Manager, who is a staunch advocate of 'keeping things simple' had this to say. *"Our drawing office is now much more efficient after installing Trix Organizer. The transmittal bottle necks have reduced considerably and the users find the software easy to use due to its MS Outlook like interface. It takes me a couple of minutes to train a new user on the basic functions. We chose Trix Organizer over the competition because it was uncomplicated and had easier search functions. Due to a cost effective on-site pre-study the system was well designed to our processes. I have installed it on 100 PCs and this will increase in the future. We expect even more efficiency once our requested customisations are developed and installed by the Provanum Group."*

The customisations referred to were the need to address Rowecord Engineering's unusually recursive transmittal paths. The Provanum Group modified the existing Trix Organizer Document Transmittal Module to address Rowecord Engineering's unique needs in this respect.

THE SAVINGS

Trix Organizer was implemented at Rowecord Engineering in 2009. A year later Lugg had this additional observation. *"Before Trix Organizer was installed, if a shop floor worker needed a drawing for fabrication he would have to walk from the factor office to the drawing office and ask a clerk for the right drawing. The clerk would then search through the complicated project folder server structure to find the right drawing. When the clerk was reasonably sure that it was the most current version (not always 100 % sure) they would print it out and give to the shop floor worker who would walk back to the factory. This took at least 15 minutes each time. With the installation of Trix the shop floor has access directly to the right project structure from their terminal using the Trix EasyView client. Using search filters they locate the project and see the most up to date version of the drawing they need. Then they use the tools in the Trix viewer to print only the part of the drawing they need for fabrication. This has given us at least a 50 % savings in time and confidence that we are looking at the right version every time."*

BENEFITS RESULTING FROM INSTALLING TRIX ORGANIZER

Workflow Bottleneck Removal

Reducing the volume of paperwork streamlined the system and eliminated transmittal bottlenecks.

Prevention of Version Conflicts

As the system ensures only one authorized user can make changes to a file at a time the problem of parallel edits by multiple users was eliminated. And users only see approved and released documents.

Brief learning curve

Because the system uses the folder paradigm (but without weaknesses inherent in the Explorer approach) and some easily taught filtering, new users at all levels begin using the system with only minimal training.

Immediacy

Information that was previously a 'walk and a chat' away is now available on the local computer workstation.

Elimination of Excel Spreadsheets

The Trix Organizer Transmittal Module, in addition to handling the actual transmittals, removed the need for Excel tracking sheets. Maintenance of these sheets created bottlenecks. And as a side effect, printing costs have decreased dramatically.

Direct Email distribution

The system's connection to the Microsoft Exchange address book provides email transmittal of reports and drawings directly to customers.

Standardisation

The system ensures that the company standards are followed regarding file storage and information sharing. There are no longer different systems for different people.

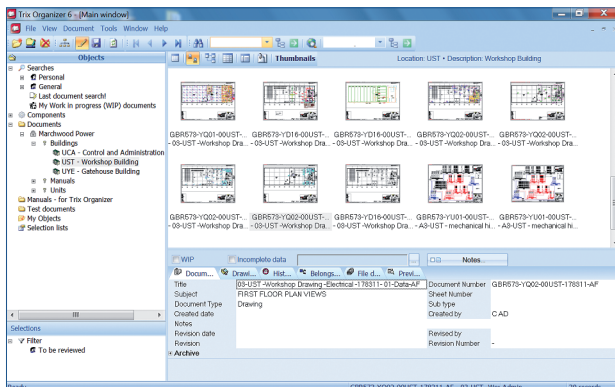
Environmental Impact

At the information level there are significant reductions in paper use. And operationally there is higher utilization of machinery so idling power consumption is reduced.

Quality Audits

Quality Control Auditors use the immutable history of changes which Trix Organizer records.

For more information contact 978 256 4445 or sales@trixsystems.com.



"Trix Organizer gave us the critical control we needed for accurate drawing transmittals."

Stan Lugg, Project Manager,
Rowecord Engineering Ltd



GOTHENBURG | STOCKHOLM | BOSTON | LONDON

We deliver turnkey document management systems designed specifically for the robust requirements of the engineering world. Product development is in-house and we quickly respond to emerging needs, so our clients enjoy customized solutions with all the reliability and reasonable pricing of standardized software.